

# TCAR

## TransCarotid Artery Revascularization

### PROCEDURAL STEPS

ENROUTE® Transcarotid Neuroprotection & Stent System

#### Step 1: Pre-Procedure & Device Prep



Through DUS or CT, confirm CCA diameter is  $\geq 6$ mm, free of significant disease and distance from clavicle to carotid bifurcation is  $\geq 5$ cm

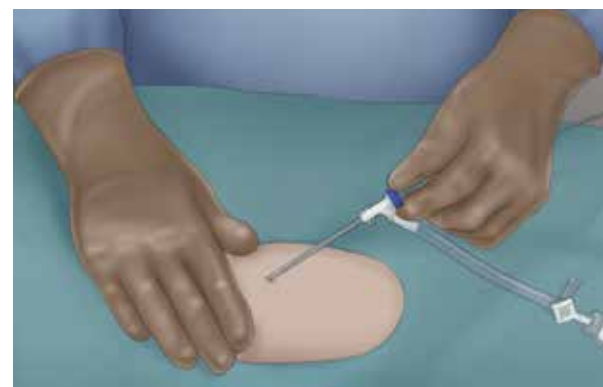


Flush and close the Venous and Arterial Sheath Sets.

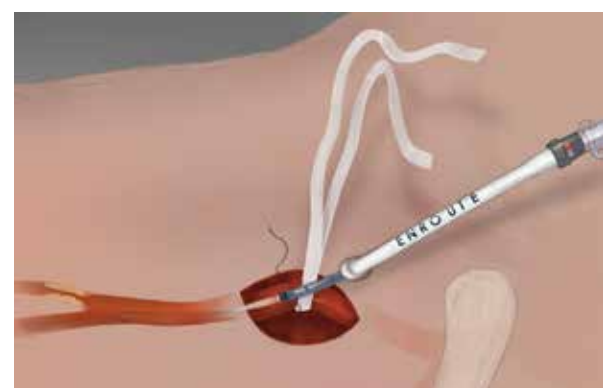


Ensure Flow Controller is set to Low Flow for system prep.

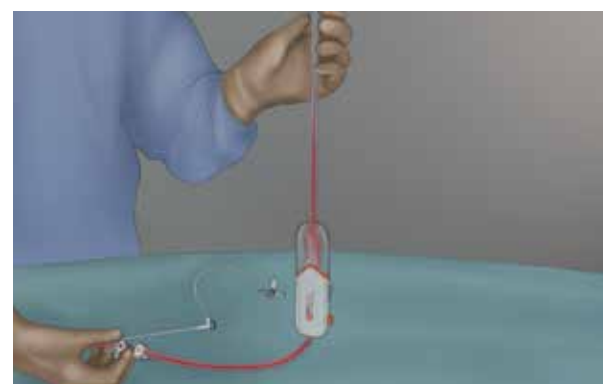
#### Step 2: Insert Sheaths & Connect Flow Controller Line



Access femoral vein with ENROUTE Venous Return Sheath, then secure Sheath.



Access common carotid artery with ENROUTE Arterial Sheath, then secure Sheath.



Connect ENROUTE Flow Controller shunt line to Arterial Sheath. Backbleed to remove air, then connect to Venous Sheath.

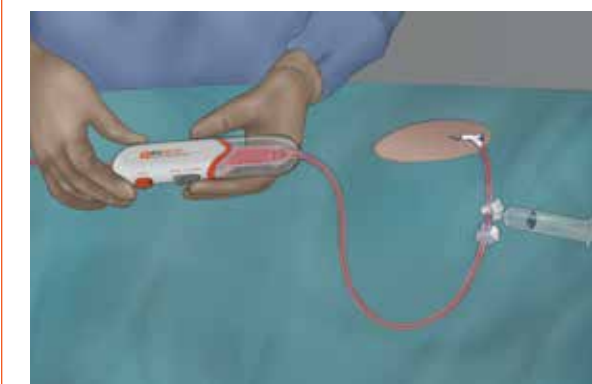
#### Step 3: Establish and Assess Reverse Flow



Occlude CCA just proximal to Arterial Sheath entry point.



Test Reverse Flow by injecting saline into venous shunt line and visualize washout.

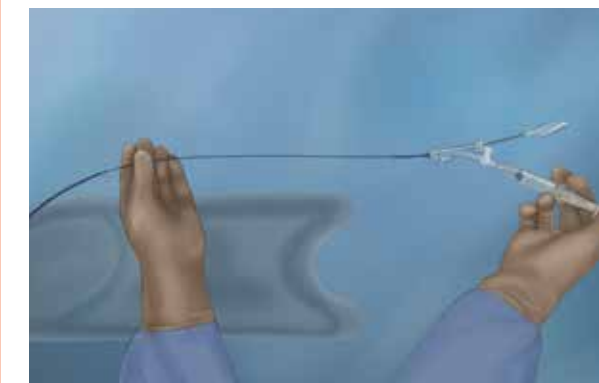


Confirm Reverse Flow on both High and Low flow settings.

#### Step 4: ENROUTE® Transcarotid Stent Prep



Flush with system in tray until saline weeps from Touhy Borst valve, then tighten valve.

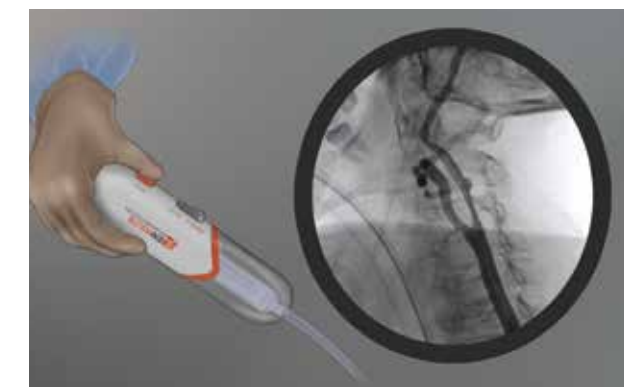


Remove from tray and continue flushing until saline weeps from guidewire exit port.

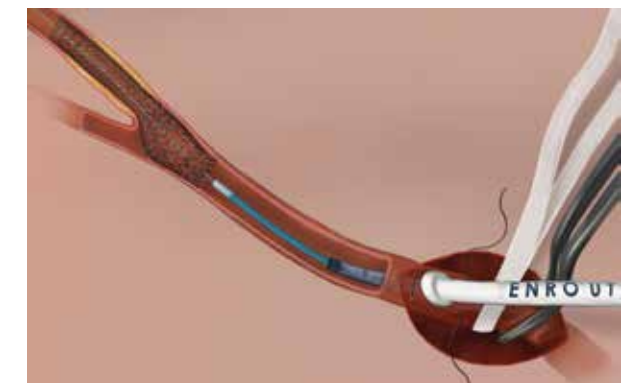


Place thumb and forefinger on guidewire exit port and flush until saline weeps from tip.

#### Step 5: Perform Intervention then Remove System



Capture angiogram by injecting contrast while depressing Flow Stop button on Flow Controller.



Perform appropriate angioplasty and deliver ENROUTE Transcarotid Stent under High Reverse Flow setting



Unclamp CCA to restore antegrade flow. Remove Arterial and Venous Sheaths and close puncture sites.